

SANY

Quality Changes the World

CHAMPION IN ITS CLASS

RELIABLE.
COST-EFFECTIVE.
PRODUCTIVE.



CONSTRUCTION MACHINERY



COMPACT EXCAVATORS **SY135C**

Engine
ISUZU 4JJ1X Stage V
Rated power
78.5 kW / 2000 rpm
Bucket capacity
0.6 m³
Operating mass
14666 kg

SANY

For challenging tasks, you need a first-class partner

Quality comes from experience. And from new ideas. This is why we combine these two crucial factors at SANY. This is because we are one of the leading producers, having sold more than **500 000** excavators **worldwide**. This means that you can always rely on sophisticated products that have been tried and tested in practice. An impressive **5–7%** of our annual turnover is dedicated to research and development. This is why we give you not only our word, but also our extraordinary **five-year warranty** as a guarantee of how powerful and robust our products are.

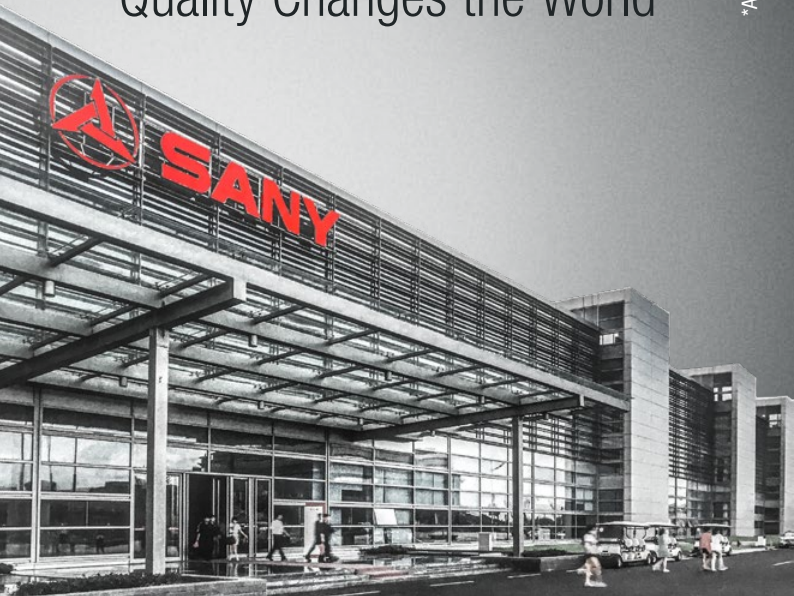
500 000
EXCAVATORS SOLD
WORLDWIDE

5–7%
TURNOVER FOR RESEARCH
AND DEVELOPMENT

**FIVE-YEAR
WARRANTY ***

Quality Changes the World

*Available on certain products only.



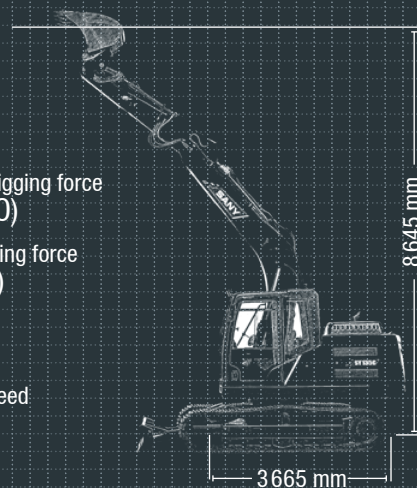
SY135C HARD FACTS

Max. bucket digging force
103 kN (ISO)

Max. arm digging force
67 kN (ISO)

Swingspeed
12 rpm

Max. travel speed
5.3 km/h





COMPACT EXCAVATOR REDEFINED

Despite its compact design, the SANY SY135C displays impressive versatility and performance. This universal machine impresses when digging, crushing, loading and backfilling and is perfect for use on sites and in places where space is limited: Its powerful Stage V Isuzu engine allows it to reach high excavating forces which would

otherwise only be possible with a significantly bigger machine. In addition its large operating radius with a maximum horizontal reach of 8,290 mm and maximum excavation depth of 5,500 mm saves times as tasks are completed more efficiently.

TOP PROPERTIES

ECONOMY

STRONG PERFORMANCE WITH LOW FUEL CONSUMPTION

More work with less fuel – the SY135C's sophisticated engine and hydraulic concept makes this a reality. The hugely powerful diesel engine, equipped with common rail technology and AdBlue emission control, puts on a strong show with its maximum torque of 375 Nm and 1 800 rpm. A choice of operating modes and automatic speed reduction optimise fuel consumption in a tangible way. This is where power meets efficiency. The total savings thanks to improved fuel efficiency result in significant economic benefits.

QUALITY

Quality is worth it – High-quality components improve the machine's durability, while additionally increasing the intervals between each maintenance and service. The stable drive with its double-bearing top rollers is also a new addition to this class.

DIMENSIONS

Compact power – The SANY SY135C tackles work extremely efficiently as a compact excavator. High performance and impressive stability – the perfect combination to complete all tasks quickly and reliably on the construction site.

USER EXPERIENCE

Easy to maintain – The engine bonnet that can be fully opened and the clear arrangement of the key components in the centre make maintenance and service quick and easy.

The 10" touch display is also impressive, boasting high resolution and intuitive operation.



SAFETY

Comprehensive protection – Alongside the camera system, beacon lamp, and travel alarm, the safety package also includes protective plates over the blade cylinders.

COMPONENTS

Reliable drive – The tried-and-tested ISUZU-4JJ1X engine guarantees reliable performance, even in harsh working conditions.

ECONOMY

Efficiency and power – The drive system reacts automatically to high thrust forces and switches automatically to a lower gear as needed for greater cost effectiveness and reduced fuel consumption.

SAFETY

**Good visibility
always guaranteed**

Two protected cameras ensure safety is enhanced during all work or when reversing. The camera views are clearly displayed on the high-resolution 10" touch display.

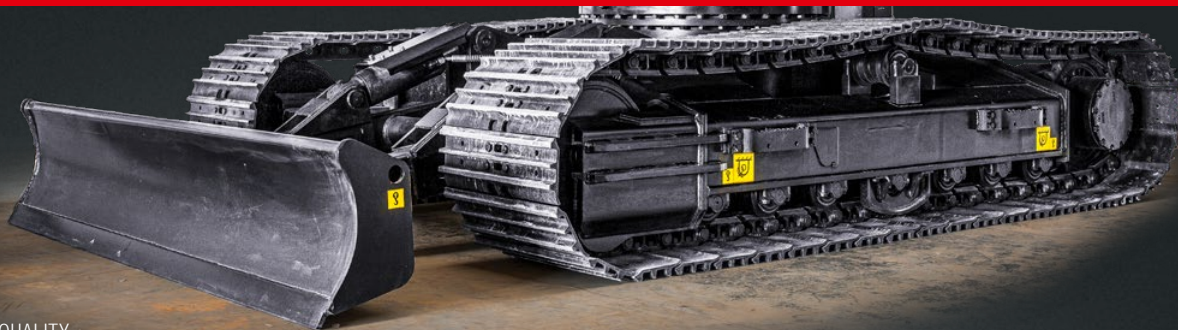


QUALITY

With the benefit of robustness

Durability and robustness are standard features on all SANY excavators. The reinforced structure of the SY135C lends the chassis exemplary stability, thereby prolonging the machine's service life. The top rollers also have double bearings, which significantly improve

durability and the guiding of the chain. What's more, all of the panels are made of steel, which makes them particularly resilient and facilitates repair, for reduced cost of ownership.

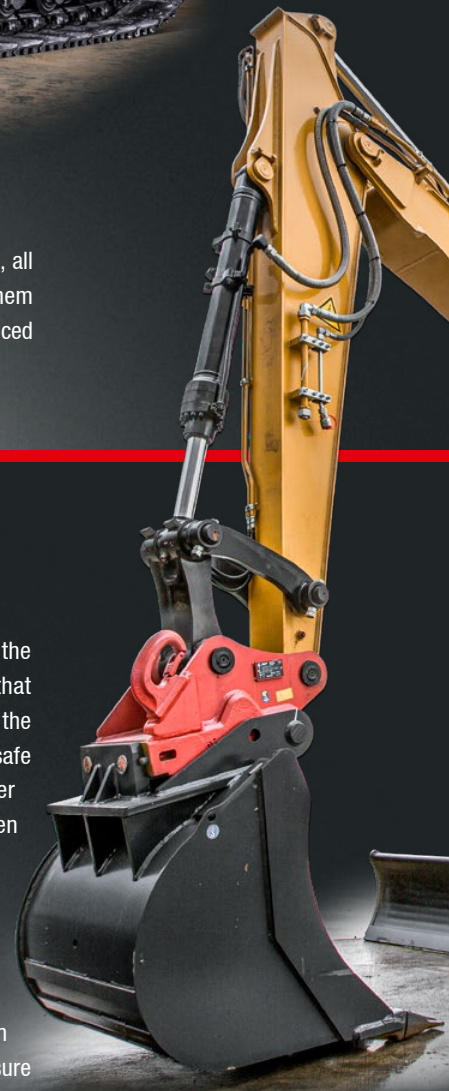


COMPONENTS

Flexibility as standard

The full hydraulic arrangement of the quick-coupler system guarantees that functions are perfectly integrated into the control menu, facilitating quick and safe attachment replacement. A further benefit is time and cost savings when compared with retrofitting.

Two proportional, individually adjustable control circuits are, of course, part of the standard equipment on the SY135C. The rotation line is fed by a separate pump to ensure smooth working at all times, even when several movements are being controlled simultaneously.

**Absolute reliability –
for total peace of mind!**

SANY has earned a reputation worldwide for reliability, durability and performance but to provide peace of mind and to ensure maximum uptime all SANY excavators are backed by the SANY industry leading 5 year warranty.*

* Terms and conditions apply. Check with your local dealer for more information.

EFFICIENCY, COST-EFFECTIVENESS AND USER EXPERIENCE



USER EXPERIENCE

Control with feeling

The joystick control enables all functions of the excavator to be operated intuitively. The hydraulics valve control responds to commands immediately. Together with the automatic speed setting, this enables work to be carried out precisely and safely with higher efficiency and lower fuel consumption for the same operation. Not forgetting the large 10" touch display, which is easy to read and navigate, and displays all important information.

USER EXPERIENCE

THE PREMIUM CLASS OF OPERATOR COMFORT

A key feature of the SY135C is comprehensive comfort for its operators. Excellent insulation around the cab provides reliable protection from noise and vibrations, as well as from high and low temperatures. The air-suspension operators seat, included as standard, offers the best possible comfort and protection from fatigue with its high seat backrest and various adjustment options. The new high-resolution 10" touch display is exceptionally user-friendly: and can also be safely operated with work gloves. The comfort package is rounded off by plenty of space and room for movement, a 12 V jack, adjustable ventilation, heating, automatic climate control system, and generous storage.



Our highlights – the added benefits SANY offers you:

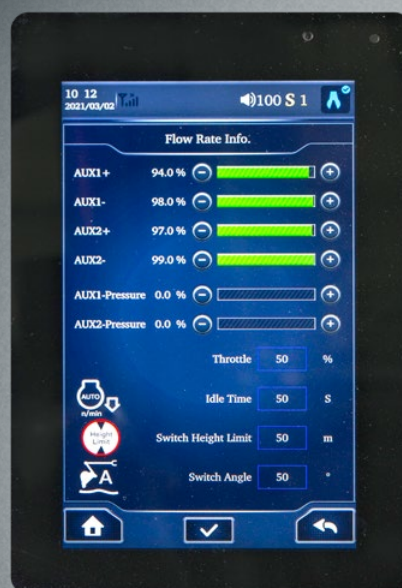
- + Stage V Isuzu engine and efficient twin auxiliary hydraulics
- + Proportional controls and auto QH pipework
- + Comfortable operators cab with numerous extras
- + Extensive safety equipment
- + 5 year / 5000 hours warranty



SAFETY

Minimising risks

Ergonomic handrails enable safe access to the maintenance platform. Large mirrors facilitate safe movement during operation, while the integrated safety valves keeps the boom and arm in position, even in the worst-case scenario.



DIMENSIONS

EVERYTHING WITHIN REACH

The SY135C impresses on-site thanks to its stability and stableness, meaning it brings its power quickly and safety to where it is needed. Its large working radius is also a great advantage, with a maximum horizontal reach of 8290 mm and maximum excavation depth of 5500 mm. The heavy dozer blade ensures additional stability.

TECHNICAL SPECIFICATIONS

ENGINE

Model	ISUZU 4JJ1X Stage V
Typ	Water-cooled, 4 cylinder, with commonrail and Adblue
Exhaust emissions	Stage V
Rated power	78.5 kW / 2000 rpm
Max. torque	375 Nm / 1600 rpm
Displacement	2999 ccm
Batteries	2 x 12V / 120 Ah

SERVICE REFILL CAPACITIES

Fuel tank	245 l
Engine coolant	23.6 l
Engine oil	15 l
Drive (per side)	1.8 l
Adblue	20 l
Hydraulic oil tank	140 l

PERFORMANCE

Swingspeed	12 rpm
Max. travel speed	High 5.3 km/h, slow 3.5 km/h
Max. travel force	114 kN
Gradeability	35°
Bucket capacity	0.6 m³
Groundpressure	0.39 kg/cm²
Bucket digging force ISO	103 kN
Arm digging force ISO	67 kN

OPERATING WEIGHT

SY135C	14 666 kg	Includes 75kg (165 lbs) operator full fuel tank and excludes any attachments or hitch
--------	-----------	---

RELIEF VALVE SETTINGS

Implement circuit	343 bar
Swing circuit	250 bar
Travel circuit	343 bar
Pilot pressure	39 bar

HYDRAULIC SYSTEM

Main pump	2 x variable-piston-pump with electronic positive control
Max. oil flow	2 x 126 l/min
Travel motor	Variable displacement axial piston motor
Swing motor	Axial piston motor
Max. oilflow (AUX2)	126 (252) l/min
Max. oil flow (AUX1)	40 l/min

UNDERCARRIAGE AND UPPER STRUCTURE

Boom length	4600 mm
Arm length	3000 mm
Bottom rollers	7
Top rollers	1
Rotation device	Planetary gear reducer driven by an axial piston motor, automatic hydraulic released slewing brake

LIFTING CAPACITIES OF LOWER AND UPPER DOZER BLADE *

Load point height	Radius												Digging reach maximal				
	2.0 m		3.0 m		4.0 m		5.0 m		6.0 m only blade down		6.0 m only blade up		7.0 m		Capacity		mm
7,0 m kg	3200 3200												2550	2550	4248		
6,0 m kg	3150 3150												2250	2250	5336		
5,0 m kg	3500 3500 2400 2400 2400 2400												2100	2100	6066		
4,0 m kg	3950 3950 3700 3500 3550 2650 3550 2650												2050	2050	6562		
3,0 m kg	5800 5800 4650 4650 4050 3400 3700 2600 3700 2600												2050	2050	6875		
2,0 m kg	7500 6800 5450 4500 4500 3300 3950 2550 3900 2550 2300 2050												2100	2100	7030		
1,0 m kg	6800 6450 6150 4300 4900 3200 4150 2500 3800 2500 2450 2000												2200	2200	7039		
Ground line kg	6750 6300 6500 4200 4900 3100 4300 2450 3750 2450												2350	2350	6901		
-1,0 m kg	4550 4550 8450 6250 6550 4100 5200 3050 4250 2400 3750 2400												2600	2600	6607		
-2,0 m kg	6900 6900 8150 6300 6300 4100 5000 3050 3950 2400 3750 2400												3050	3050	6135		
-3,0 m kg	9600 9600 7200 6350 5600 4150 4350 3100												3750	3750	5437		
-4,0 m kg	5500 5500 4150 4150												3550	3550	4402		

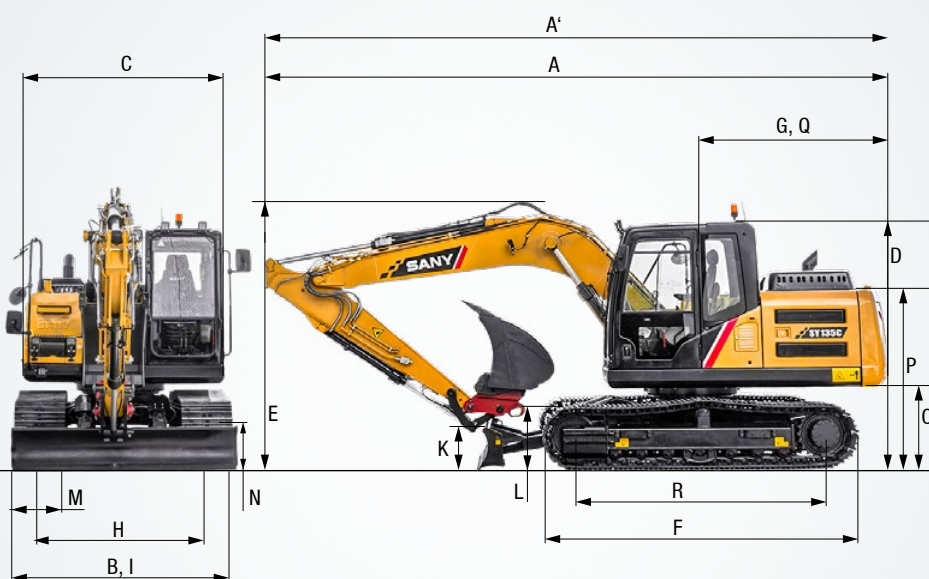
*at 700 mm track pads width

DIMENSIONS (TRANSPORT)

A	Transport length	7700 mm
A'	Transport length (blade)	8850 mm
B	Transport width*	2590 mm
	Transport width***	2690 mm
C	Overall width of upper structure	2490 mm
D	Height over cabin/ROPS	2820 mm
E	Height of boom – transport	3180 mm
F	Overall length of crawler	3665 mm
G	Tail length	2205 mm
H	Track gauge	1990 mm
I	Undercarriage width (blade)*	2590 mm
	Undercarriage width (blade)**	2690 mm
J	Horizontal distance to blade	2650 mm
K	Blade height	480 mm
L	Track height	815 mm
M	Track pads width	600 mm 700 mm
N	Min. ground clearance	425 mm
O	Counter weight clearance	910 mm
P	Engine cover height	2130 mm
Q	Tail swing radius	2205 mm
R	Center distance of tumbler	2930 mm

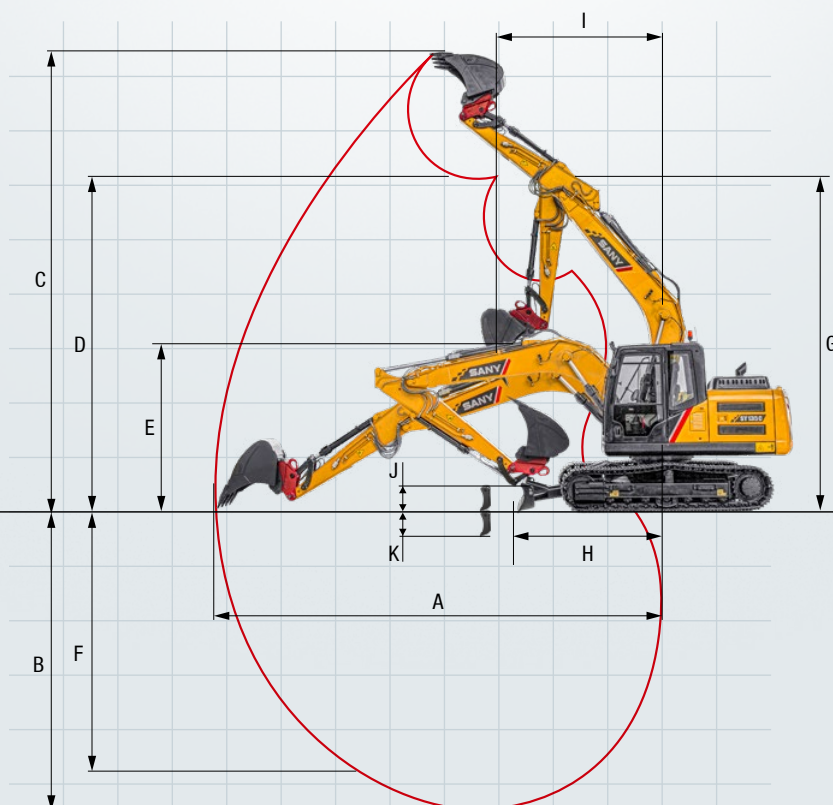
* at 600 mm track pads width

** at 700 mm track pads width



WORKING AREA

A	Max. digging reach	8680 mm
B	Max. digging depth	5970 mm
C	Max. digging height	9040 mm
D	Max. dumping height	6630 mm
E	Min. dumping height	2400 mm
F	Max. vertical digging depth	5350 mm
G	Overall height over arm by min. swing radius	6500 mm
H	Arm head distance with work equipment retracted as far as possible	2610 mm
I	Min. swing radius	2500 mm
J	Max. clearance when blade up	490 mm
K	Max. depth of blade down	320 mm





The SY135C – well-equipped as standard

The SANY SY135C is superbly equipped as standard with optional additional equipment to broaden its scope of possible applications.

OPERATORS COMFORT / CAB

Heated Air suspension seat	●
Automatic air conditioning C/H*	●
10" Bluetooth touchscreen with built in radio (FM/AM)	●
Armrests (adjustable)	●
12v outlets	●
Parallel wiper	●
10" touch display	●
Sky light window	●
AUX 1 on joystick	●
AUX 2 on joystick	●
Integrated cooling box	●

WORKING LIGHTS

Lights – front (LED)	●
Lights – boom (LED)	●
Lights – platform (LED)	●

SAFETY

Battery master switch	●
Orange and Green beacon	●
Lockable service doors	●
Hand Rails	●
Lockable fuel cap	●
360° camera	●

WORKING EQUIPMENT

Boom and arm load holding valves with overload indicator	●
Double acting circuit for hydraulic quick coupler with piping	●
Breaker & Shear line proportional on joystick with piping	●
Rotation line proportional on joystick with piping	●
Oil flow rate adjustable for attachments	●

HYDRAULIC SYSTEM

Swing brake	●
2 speed travel	●
Piping for additional hydraulic function AUX 1	●
Piping for additional hydraulic function AUX 2	●
Hydr. Pre-pressure operating joysticks	●
Main filter	●

ENGINE/ENGINE COMPARTMENT

Auto idle	●
Electric re-fueling pump	●
Fuel pump	●

UNDERCARRIAGE

Steel tracks	●
Cylinder guards – dozer blade	●
Holes/loops for fixing	●

Standard equipment ● Special option ●

The standard and special options differ depending on the country in which the crawler excavator is delivered. If you have any questions, please contact your dealer directly.

* The air conditioner contains fluorinated greenhouse gases: Refrigerant type: HFC-134a, Global warming potential: 1 430, Quantity: 0,85 kg, CO₂e: 1,22 t

Parts supply – quick and reliable

ANY genuine parts are designed, tested and manufactured to meet the exact specification and requirements of your SANY excavator. They will fit exactly as needed and will deliver maximum performance. They also ensure optimum safety for the operator on site and reduce unplanned maintenance and downtime.

Ultimately, SANY genuine parts are the best choice for your machine and are backed with a 12 month warranty period.



A SERVICE YOU CAN RELY ON

Just as we do with our excavators, we also demand high quality and reliability of our service products. This underlines our equipment's performance in terms of their durability and their excellent price-performance ratio. After all, maintenance is crucial

for efficiency, cost-effectiveness and safety. Your SANY dealer is happy to help you with a comprehensive range of services to ensure that your machine continues operating efficiently in the long term.

SANY – flexible, fast and always there for you

Rapid assistance, tailored advice and a reliable supply of original parts – that is what we mean by a premium service. To locate your nearest dealer, visit <https://www.sanyuk.com>.



The added benefits SANY offers you:

- + Experienced dealer network throughout the UK and Ireland
- + Direct sales and support route in Scotland and the south east of England.
- + Dedicated ANY team based in the UK to support you and your product
- + UK parts warehouse to ensure SANY machines are fully supported

Detailed information in black and white

Handbooks and documents are available for all SANY compact excavators, and these can help you with operation, maintenance, servicing and repairs. These include operating and maintenance instructions and technical specifications.



PERFORMANCE YOU CAN RELY ON



The SY135C resoundingly proves that the performance of a compact excavator is not necessarily determined by bulky size. Weighing a total of almost 15 tonnes, it offers the optimum ratio of power to manoeuvrability. In addition, the robust, wide heavy-duty undercarriage and the robust dozer blade provide a high level of stability. This means that it can optimally apply its power for a comprehensive range of applications where other machines have to adapt.

QUALITY IS WORTH IT

All components are designed for a long service life. This is ensured by the careful workmanship and high quality materials from the worlds leading manufacturers.

COMPACT POWER

All aspects of the machine have been developed to ensure **excellent excavating forces at maximum stability**, thereby offering enormous advantages.

EASY TO MAINTAIN

All routine checks and maintenance can be carried out quickly and easily thanks to a wide opening bonnet and the central arrangement of all key components.

COMPREHENSIVE PROTECTION

The SY135C's **safety equipment** includes, amongst other features, **a driving alarm and rotating beacon**. The **camera, in conjunction with the high-resolution 10" touch display**, is an essential component of the safety equipment.

EFFICIENCY AND POWER

In conjunction with the electronic fuel injection, the **auto idle function** adjusts the engine speed to the performance required – while the smart hydraulic system **reduces the fuel consumption**, engine wear and exhaust emissions.

TECHNICAL HIGHLIGHTS

Engine	ISUZU 4JJ1X Stage V
Rated power	78.5 kW / 2 000 rpm
Max. torque	375 Nm / 1 600 rpm
Max. travel speed	5.3 km/h
Swing speed	12 rpm
Main pump	2 x variable-piston-pump with electronic positive control
Max. oil flow	2 x 126 l/min

Not all products are available in all markets. As part of our continuous improvement process, we reserve the right to modify specifications and designs without giving prior notice. The figures may contain additional options.

SANY

Quality Changes the World

**SANY HEAVY
MACHINERY (UK) LTD**

info@sanyuk.com
www.sanyuk.com