

SY35U

SANY

Quality Changes the World



A POWERFUL LIGHTWEIGHT

COMPACT. FLEXIBLE. VERSATILE.

CONSTRUCTION MACHINERY



MINI EXCAVATORS
SY35U

Engine
Yanmar 3TNV88F
Rated power
18.2 kW / 2 200 rpm
Bucket capacity
0.12 m³
Operating mass
3 790 kg

SANY

For challenging tasks, you need a first-class partner

Quality comes from experience. And from new ideas. This is why we combine these two crucial factors at SANY. This is because we are one of the leading producers, having sold more than **500 000** excavators **worldwide**. This means that you can always rely on sophisticated products that have been tried and tested in practice. An impressive **5–7%** of our annual turnover is dedicated to research and development. This is why we give you not only our word, but also our extraordinary **five-year warranty** as a guarantee of how powerful and robust our products are.

500 000

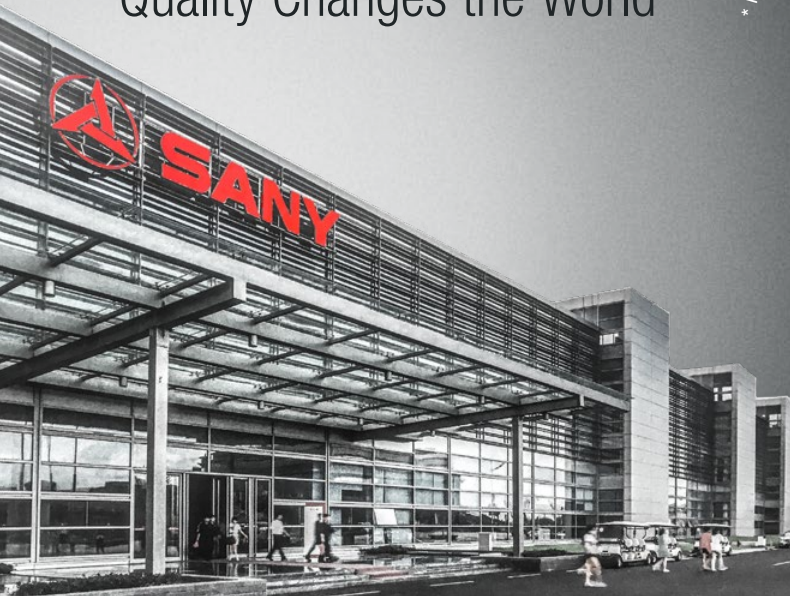
EXCAVATORS SOLD
WORLDWIDE

5–7%

TURNOVER FOR RESEARCH
AND DEVELOPMENT

FIVE-YEAR WARRANTY *

Quality Changes the World



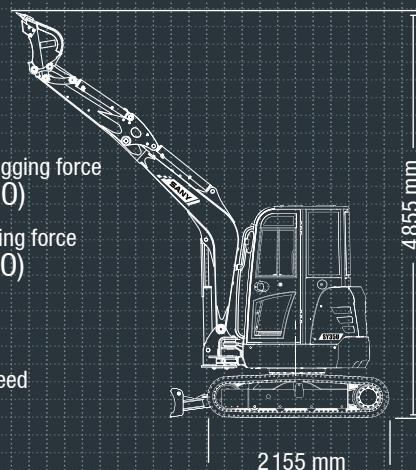
SY35U HARD FACTS

Max. bucket digging force
30.4 kN (ISO)

Max. arm digging force
18.2 kN (ISO)

Swingspeed
10 rpm

Max. travel speed
4.5 km/h



* Available on selected products only



GREAT PERFORMANCE CAN BE SO SMALL

The SANY SY35U zero tail swing excavator is a little powerhouse. Its compact dimensions make it the perfect tool wherever power and manoeuvrability need to come together. Versatility is one of the great strengths of this

“little” machine. As a true all-purpose excavator, it can also be equipped with powerful attachments such as a hammer or a grapple, providing maximum versatility in construction as well as in smaller demolition and civil engineering works.



ECONOMY

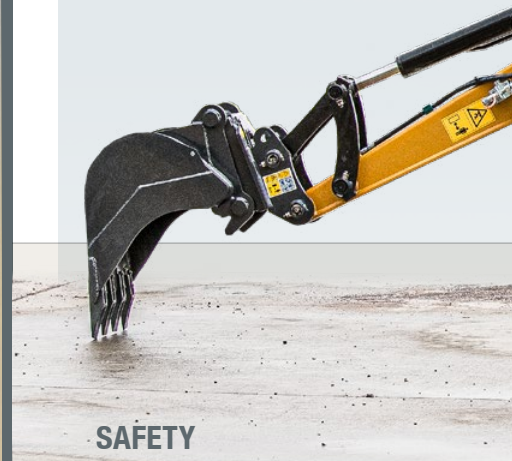
LESS IS MORE – AT LEAST IN TERMS OF OPERATING COSTS

The SY35U pays for itself. A versatile workhorse, it is a future-proof investment in performance, reliability and productivity. With a complete package of comprehensive technology, developed for maximum profitability.



QUALITY

Robust and durable – the most important protective elements and reinforcements as well as all access panels parts are made of steel, ideal for tough use in the construction industry.



SAFETY

No compromise – the SY35U is fully equipped for precise, safe working even under extreme application conditions – There's no compromise when it comes to safety.

ECONOMY

Efficiency or performance? Why should you have to choose?

The times when you had to pay for high performance with extremely high operating costs are over. The SY35U combines exemplary cost-effectiveness and performance.

The modern drive and the load-sensing hydraulic system with variable delivery rate are designed for extremely low fuel consumption in compliance with the stage V emission standards.

With two work programs to choose from, the performance of the machine can also be specifically optimised for the task at hand.



DIMENSIONS

Compact and powerful – the zero tail swing design of the SY35U allows for easy manoeuvrability on site and facilitates work in confined spaces.

USER EXPERIENCE

Extremely comfortable – from easy access to the comfortable seat and the ergonomically designed controls, the operator can look forward to maximum comfort. The Bluetooth radio with integrated hands-free control adds to the comfort package.



COMPONENTS

Quality as standard – the SY35U already comes with an extensive specification as standard. This can be upgraded with additional special options and adapted to individual requirements.

ECONOMY

Economically impressive – with low fuel consumption, straightforward maintenance and low investment costs, the SY35U offers an impressive price-performance ratio in every respect.



Absolute reliability – for total peace of mind!

SANY has earned a reputation worldwide for reliability, durability and performance but to provide peace of mind and to ensure maximum uptime all SANY excavators are backed by the SANY industry leading 5 year warranty.*

* Terms and conditions apply. Check with your local dealer for more information.

QUALITY

Fully resilient –

Durability and robustness are standard features on all SANY mini excavators. Panels are made of steel, which makes them particularly robust machines in tough everyday working conditions and helps to reduce overall cost of ownership.



EFFICIENCY, COST-EFFECTIVENESS AND USER EXPERIENCE



USER EXPERIENCE

Maintenance and servicing made easy

Carrying out maintenance and inspections quickly and reliably isn't a problem with SANY's sophisticated service concept, where each part can be maintained from ground level. The generously sized bonnets ensure quick and easy access to all maintenance-related components.

USER EXPERIENCE

OPERATOR COMFORT

The cab of the SY35U has been designed to meet the everyday requirements of a modern construction site. The manual-suspension operators seat and armrests with multi-position locations allow for an optimal working posture. While the excavator controls are ergonomically designed to provide a comfortable operating experience and to enhance precision and control.

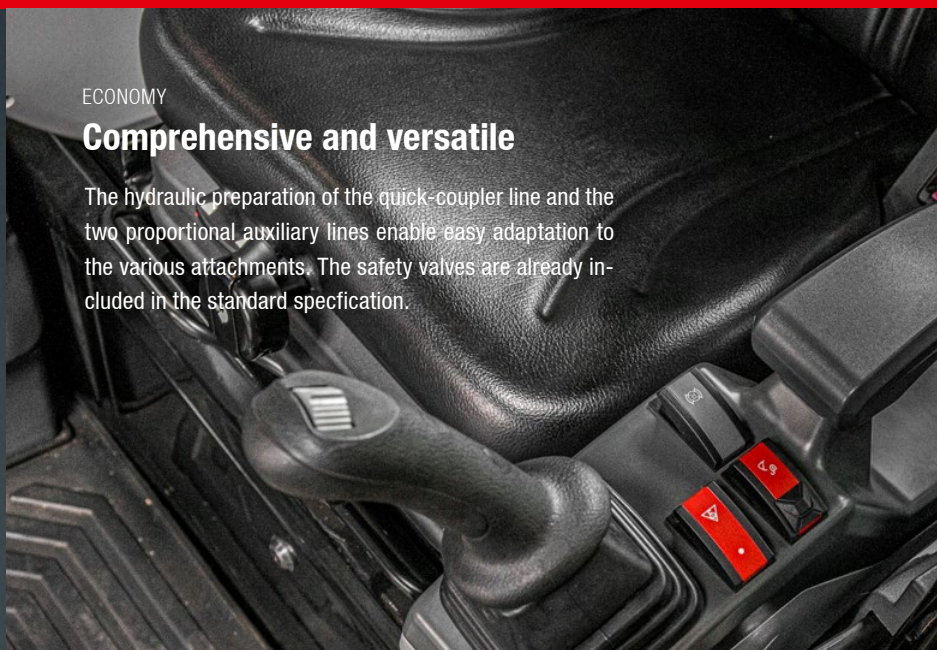
The cab comes equipped with a high-resolution screen with integrated telematics for easier fleet management as-well as other standard features such as manual climate control to maintain internal cab temperature settings.

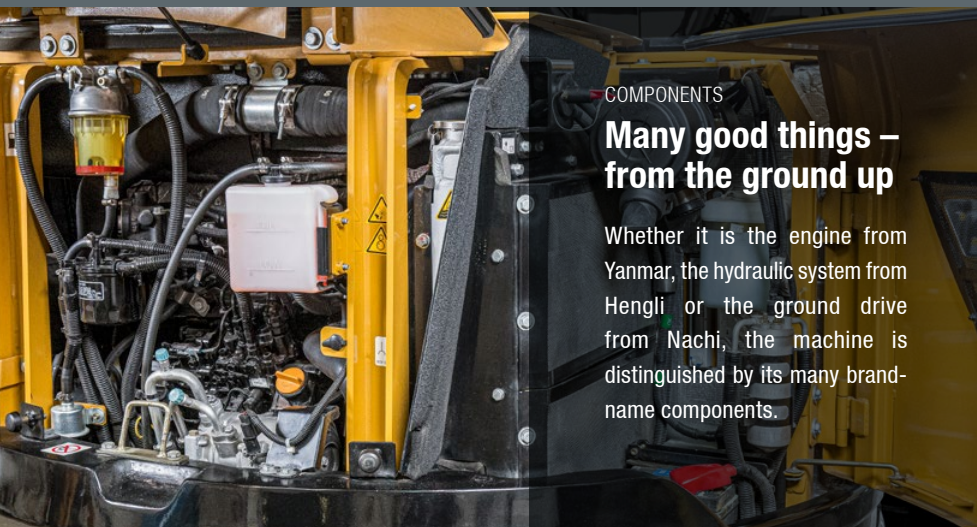


ECONOMY

Comprehensive and versatile

The hydraulic preparation of the quick-coupler line and the two proportional auxiliary lines enable easy adaptation to the various attachments. The safety valves are already included in the standard specification.





COMPONENTS

Many good things – from the ground up

Whether it is the engine from Yanmar, the hydraulic system from Hengli or the ground drive from Nachi, the machine is distinguished by its many brand-name components.



Our highlights – the added benefits SANY offers you:

- + Zero tail swing design
- + Stage V Yanmar engine
- + Load sensing hydraulic system
- + Next generation operators cab with integrated telematics
- + 5 year/5000 hours warranty

SAFETY

What is important must be protected

Safety for both people and machines is ensured by the ROPS/FOPS certified cab and other safety features such as battery disconnect switch, rotating warning beacon and travel alarm to increase visibility and attract attention.



DIMENSIONS

Perfect stability – in every situation

The track width of 1420 mm, the low centre of gravity and the well thought-out weight distribution give the SY35U first-class stability – even when working at maximum horizontal reach and in extreme conditions. At the same time, the compact zero tail causes only a slight shift in the centre of gravity, even when the upper structure is swivelled. The swing boom ensures an even wider range of applications and makes it possible to work comfortably and safely parallel to building boundaries of any kind.



TECHNICAL SPECIFICATIONS

ENGINE

Model	YANMAR 3TNV88F
Typ	Water-cooled, 4 cylinder, diesel engine with turbulence chamber fuel injection
Exhaust emissions	Stage V
Rated power	18.2 kW / 2 200 rpm
Max. torque	91.4 Nm / 1 320 rpm
Displacement	1 642 ccm
Batteries	1 × 12 V / 80 Ah

HYDRAULIC SYSTEM

Main pump	Variable displacement axial piston pump
Max. oil flow	88 l/min
Travel motor	Variable displacement axial piston motor
Rotation device	Axial piston motor
Max. oil flow (AUX1)	45 l/min
Max. oil flow (AUX2)	45 l/min

SERVICE REFILL CAPACITIES

Fuel tank	50 l
Engine coolant	6.5 l
Engine oil	6.7 l
Drive (per side)	0.7 l
Hydraulic system	55 l
Hydraulic oil tank	40 l

PERFORMANCE

Swingspeed	10 rpm
Max. travel speed	High 4.5 km/h, slow 2.4 km/h
Max. travel force	36.8 kN
Gradeability	30°
Bucket capacity	0.12 m ³
Ground pressure	0.32 kg/cm ²
Bucket digging force ISO	30.4 kN
Arm digging force ISO	18.2 kN

OPERATING WEIGHT

SY35U* 3790 kg (+200kg bolt on counterweight)

Includes 75 kg (165 lbs) operator, full fuel tank and excludes any attachments or hitch

UNDERCARRIAGE AND UPPER STRUCTURE

Boom length	2 540 mm
Arm length	1 400 mm / 1 650 mm optional
Bottom rollers	4
Rotation device	Axial piston motor with planetary gear running in oil bath and single-row slewing ring. Spring-loaded slewing gear parking brake, hydraulically released.
Undercarriage	Reinforced undercarriage with larger dimensions. Welded drive frame in box design made of special material. Side frame welded to the drive frame.

RELIEF VALVE SETTINGS

Implement circuit	245 bar
Swing circuit	206 bar
Travel circuit	245 bar
Pilot pressure	35 bar

LIFTING CAPACITIES OF LOWER DOZER BLADE*

Load point height	Radius				Digging reach	
	2.0 m	3.0 m	4.0 m	Maximal		
4.0 m kg					803	660
3.0 m kg					818	503
2.0 m kg	1 000		762	855	491	667
1.0 m kg	1 447		703	1 036	468	695
Ground line kg	1 650		669	1 137	452	787
-1.0 m kg	2 372	1 245	1 631	665	1 082	451
-2.0 m kg	2 057	1 287	1 217	691	1 023	

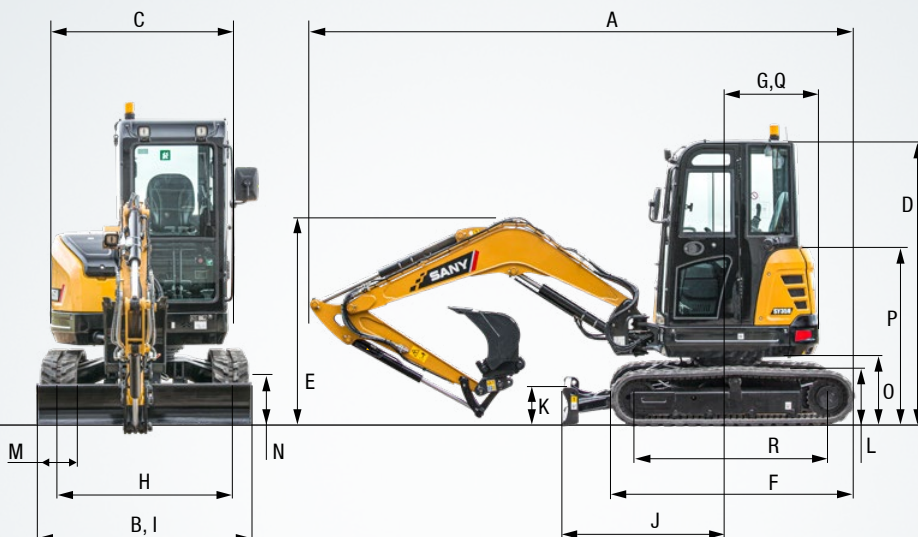
LIFTING CAPACITIES OF UPPER DOZER BLADE*

Load point height	Radius				Digging reach	
	2.0 m	3.0 m	4.0 m	Maximal		
4.0 m kg					704	660
3.0 m kg					534	503
2.0 m kg	817		762	522	491	411
1.0 m kg	755		703	499	468	387
Ground line kg	720		669	482	452	398
-1.0 m kg	1 377	1 245	717	665	482	451
-2.0 m kg	1 423	1 287	743	691	665	

*for standard arm with 1400 mm

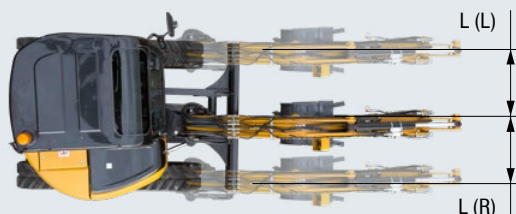
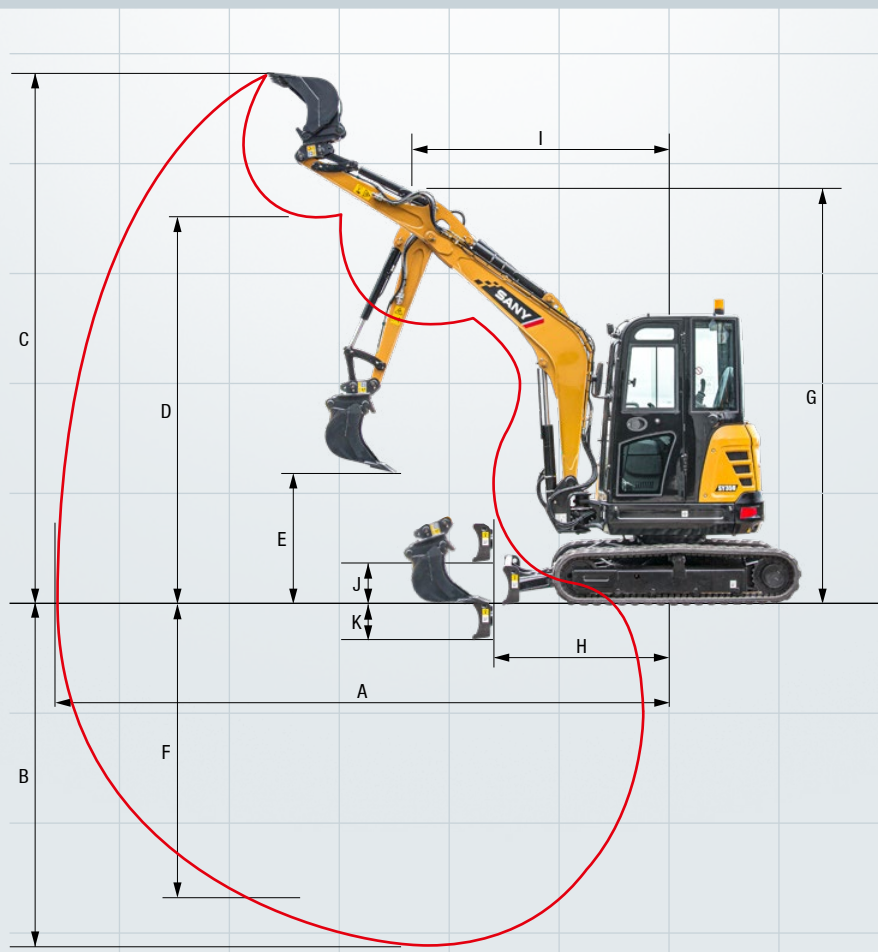
DIMENSIONS (TRANSPORT)

A	Transport length	4915 mm
B	Transport width	1720 mm
C	Overall width of upper structure	1548 mm
D	Height over cabin/ROPS	2515 mm
E	Height of Boom – transport	1800 mm
F	Overall length of crawler	2155 mm
G	Tail length	860 mm
H	Track gauge	1420 mm
I	Undercarriage width (blade)	1720 mm
J	Horizontal distance to blade	1500 mm
K	Blade height	350 mm
L	Track height	520 mm
M	Track pads width	300 mm
N	Min. ground clearance	295 mm
O	Counterweight clearance	560 mm
P	Engine cover height	1550 mm
Q	Tail swing radius	860 mm
R	Center distance of tumblers	1670 mm



WORKING AREA

A	Max. digging reach	5465 mm
B	Max. digging depth	3105 mm
C	Max. digging height	4855 mm
D	Max. dumping height	3460 mm
E	Min. dumping height	1210 mm
F	Max. vertical digging depth	2700 mm
G	Overall height over arm by min. swing radius	3690 mm
H	Arm head distance with work equipment retracted as far as possible	1955 mm
I	Swing radius by max. boomswing (L)	2245 mm
	Swing radius by max. boomswing (R)	2140 mm
	Min. swing radius	2475 mm
J	Max. clearance when blade up	375 mm
K	Max. depth of blade down	370 mm
L	Offset boom (L)	645 mm
	Offset boom (R)	725 mm
	Max. boom-swing angle (L)	57°
	Max. boom-swing angle (R)	63°



The SY35U – well equipped as standard

Productive and concentrated work is only possible with the right equipment. The SY35U leaves practically nothing to be desired here.



OPERATORS COMFORT / CABINE

Heater	●
Manual air condition system*	●
USB/Bluetooth radio	●
Armrests (adjustable)	●
12v outlets	●
Wiper	●
Sprayer f. wiper	●
AUX 1 on joystick	●
AUX 2 on joystick	●
8 stored hydraulic settings for attachments	●
Mechanical suspension seat	●

SAFETY

Battery master switch	●
Beacon lamp	●
Lockable service doors	●
Emergency lowering	●

HYDRAULIC SYSTEM

Swing brake	●
2 speed travel	●
Hydr. Pre-pressure operating joysticks	●
Travel alarm	●
Main filter	●

WORKING LIGHTS

Lights front (LED)	●
--------------------	---

Standard equipment ● Special option ●

The standard and special options differ depending on the country in which the crawler excavator is delivered. If you have any questions, please contact your dealer directly.

* The air conditioner contains fluorinated greenhouse gases: Refrigerant type: HFC-134a, Global warming potential: 1 430, Quantity: 0.625 kg, CO₂e: 0.89 t

UNDERCARRIAGE

Rubber tracks	●
Steel tracks	●
Cylinder guards – dozer blade	●
Bolt on counterweight - 200kg	●
Tie down and lifting points	●

ENGINE/ENGINE COMPARTMENT

Auto idle	●
Diesel filter	●
Dehydr. for fuel system	●
Storage for grease gun	●

WORKING EQUIPMENT

Boom and arm load holding valves with overload indicator	●
Double acting circuit for hydraulic quick coupler with piping	●
Breaker&Shear line proportional on joystick with piping	●
Rotation line proportional on joystick with piping	●
Flow adjustment for attachments	●
Dozer blade	●
Cylinder guards – boom	●
Bolt on counterweight - 200kg	●
1.65 m long arm	●
Angled dozer blade	●
Blade safety valve	●

Parts supply – fast and reliable

ANY genuine parts are designed, tested and manufactured to meet the exact specification and requirements of your SANY excavator. They will fit exactly as needed and will deliver maximum performance. They also ensure optimum safety for the operator on site and reduce unplanned maintenance and downtime.

Ultimately, SANY genuine parts are the best choice for your machine and are backed with a 12 month warranty period.



A SERVICE YOU CAN RELY ON

Just as we do with our machines, we also demand high quality and reliability of our service products. This underlines our equipment's performance in terms of their durability and their excellent price-performance ratio. After all, maintenance is crucial

for efficiency, cost-effectiveness and safety. Your SANY dealer is happy to help you with a comprehensive range of services to ensure that your machine continues operating efficiently in the long term.

SANY – flexible, fast and always there for you

Rapid assistance, tailored advice and a reliable supply of original parts – that is what we mean by a premium service. To locate your nearest dealer, visit <https://www.sanyuk.com>.



The added benefits SANY offers you:

- + Experienced dealer network throughout the UK and Ireland
- + Direct sales and support route in Scotland and the south east of England.
- + Dedicated ANY team based in the UK to support you and your product
- + UK parts warehouse to ensure SANY machines are fully supported

Detailed information

Handbooks and documents are available for all SANY excavators, and these can help you with operation, maintenance, servicing and repairs. These include operating and maintenance instructions and technical specifications.





THE LITTLE ONE WHO OVERCOMES BIG THINGS

Precise results and reliable high performance, getting down to work even in confined spaces – the SY35U offers everything you expect from a mini excavator. It is robust, easy to use and thanks to its excellent performance, suitable for all types of excavation work.

ROBUST AND DURABLE

The most important protective elements and reinforcements as well as all cladding parts are made of **steel**. **Robot-manufactured weld seams** guarantee a long service life under all conditions.

EXTREMELY COMFORTABLE

Impressively simple control thanks to the **large display** and the **various working modes** – combined with the comfort of an **air conditioning system**.

NO COMPROMISE

In order to provide **the best possible protection for both people and machines**, devices such as cylinder guard plates are already integrated. It goes without saying that the platform is **ROPS/FOPS certified**.

COMPACT POWER

In its performance class, the SY35U is an outstanding powerhouse with the small dimensions of a zero tail swing excavator. The swivel bracket further increases flexibility.

ECONOMIC

The low **fuel consumption in compliance stage V emissions**, the intelligent load-sensing hydraulic system and the option of purchasing the SY35U with a bolt on counterweight are all impressive as a complete package with an excellent price-performance ratio.

QUALITY AS STANDARD

High-quality components from brand manufacturers guarantee top performance and a high level of operational safety – also for the **extensive standard equipment**, which includes several **LED work lights**.

TECHNICAL HIGHLIGHTS

Engine	YANMAR 3TNV88F
Rated power	18.2 kW / 2200 rpm
Max. torque	91.4 Nm / 1 320 rpm
Max. travel speed	4.5 km/h
Swing speed	9 rpm
Main pump	Variable displ. axial piston pump
Max. oil flow	88 l/min

Not all products are available in all markets. As part of our continuous improvement process, we reserve the right to modify specifications and designs without giving prior notice. The figures may contain additional options.

SANY

Quality Changes the World

SANY HEAVY
MACHINERY (UK) LTD

info@sanyuk.com
www.sanyuk.com