



SY60C QUICK START GUIDE



SY60C Cab Layout



01. Date and time
02. Telematics signal
03. Radio volume
04. Work mode and throttle selection
05. Attachment selection
06. Regeneration light
07. Exhaust temperature light
08. Charge indicator
09. Water in fuel warning
10. Engine oil pressure
11. Emergency stop activated
12. Hoisting limit alarm
13. Cabin ventilation ON/OFF
14. Coolant temperature
15. Current shift working hours
16. Menu
17. Radio
18. Travel speed selection
19. Engine auto idle ON/OFF
20. DTC, quick access menu
21. Total machine working hours
22. Fuel gauge
23. Work mode selection
24. Air conditioning ON/OFF
25. Cabin fan speed control
26. Cabin temperature control
27. Fuel level low warning
28. Coolant temperature warning
29. Prestart heating
30. Air filter blockage light
31. Engine management light
32. Regeneration inhibited
33. Regeneration active
34. Rear facing camera
35. Throttle position

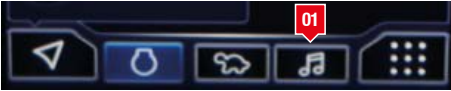
Menu



01. Menu access
02. Auto shut down timer
03. Diagnostic trouble codes
04. Maintenance indicator
05. Screen brightness

To access this menu press button 1 in the lower left-hand corner of the display.

Radio



To access the radio functions of the machine press button 1.

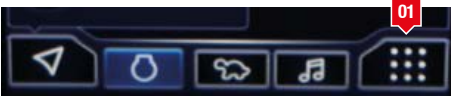


01. Radio
02. Bluetooth
03. USB
04. Station selection
05. Preset stations
06. Station list
07. Search
08. Play/pause
09. AM selection
10. FM selection
11. Home
12. Volume
13. Return

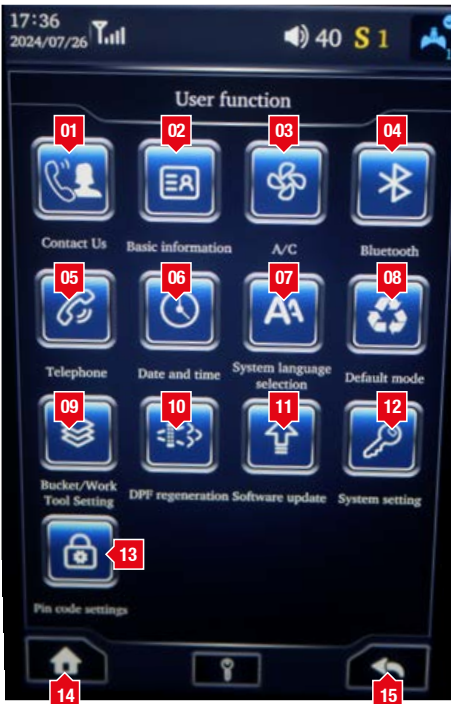
To select stations use the arrows in area 4, to scroll to the desired station.

To save a station as a preset, press and hold any of the preset buttons to save to that button.

Main Menu



To access the main menu, press button 1 in the lower righthand corner of the display home page.



01. Contact
02. Basic machine information
03. Air conditioning/ heater control
04. Bluetooth connection
05. Telephone connection
06. Date and time
07. Language selection
08. Work mode default selection
09. Attachment select and setup
10. Regeneration
11. Software update
12. Service menu
13. Immobiliser
14. Home
15. Return

Air Conditioning Control

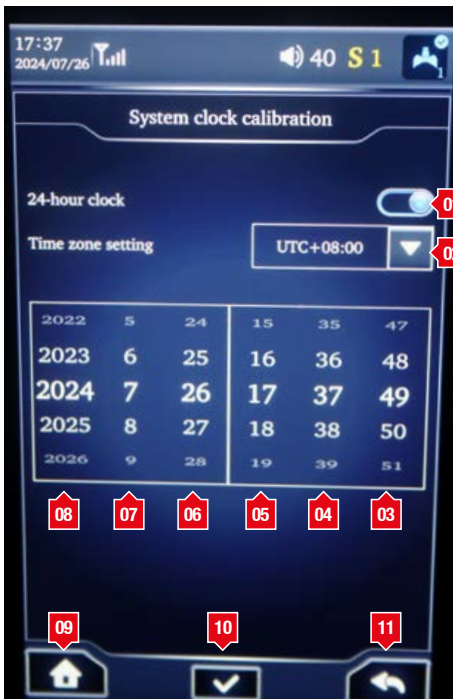
To access the A/C menu press button number 3 on the main menu (page 4).



- 01. Temperature selection
- 02. Fan speed selection
- 03. Fan speed increase and decrease
- 04. Heating and cooling system power on/ off
- 05. Temperature increase / decrease
- 06. Celsius / Fahrenheit
- 07. Air conditioning ON/OFF

Date and Time

To access date and time settings, press button 6 (page 4).



01. 12 / 24-hour selection
02. Time zone selection
03. Seconds adjustment
04. Minute adjustment
05. Hour adjustment
06. Day adjustment
07. Month adjustment
08. Year adjustment
09. Home
10. Save any changes
11. Return

To adjust any time or date settings, scroll required item to be changed until correct or desired setting is found. Press button 10 to save any changes made.

Language Selection

To access the language selection press button 7 (page 4).

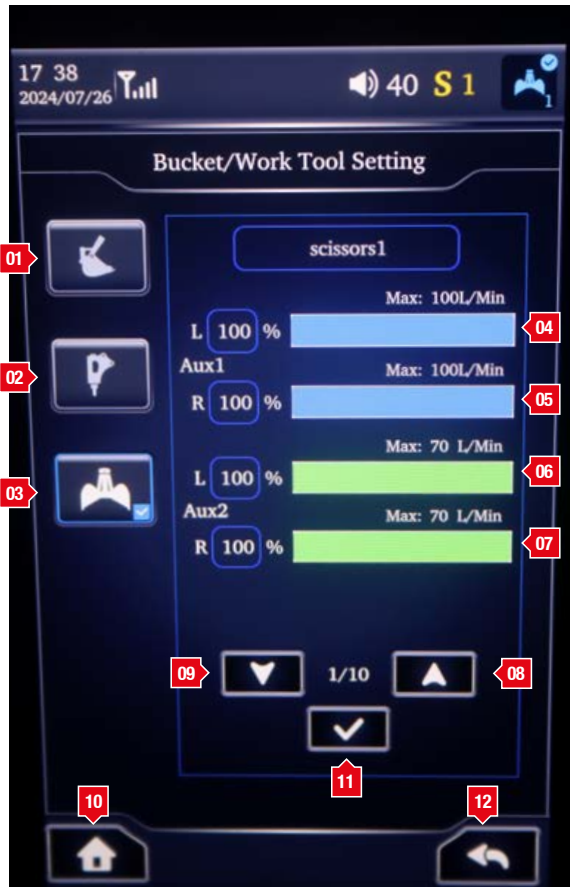


Once your required language has been selected, press the save button 2.

01. Home
02. Save
03. Return

Tool Selection

To access the tool menu press button 9 (page 4).



01. Bucket mode
02. Hammer mode
(Single acting functions)
03. Selector grab
(Double acting functions)
04. AUX 1 left hand pipe
flow adjustment
05. AUX 1 right hand pipe
flow adjustment
06. AUX 2 left hand pipe
flow adjustment
07. AUX 2 right hand pipe
flow adjustment
08. Preset selection increase
09. Preset selection decrease
10. Home
11. Save selection
12. Return

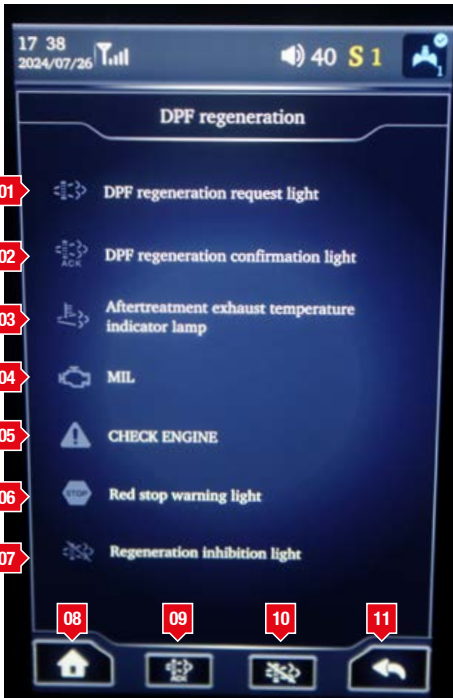
To select a tool, select the required tool, hammer (single acting) or grab (double acting) and set the required flow for the attachment.*

Once the required flows have been set press button 11 to save the setting.

PLEASE NOTE THAT ANY ATTACHMENT THAT IS TO BE FITTED TO A MACHINE NEEDS TO BE VERIFIED BY AN ENGINEER WITH A FLOW METER.

Regeneration

To access the regeneration page press button 10 on the main menu (page 4).



01. DPF regeneration request
02. DPF regeneration confirmed
03. Exhaust temperature
04. Engine management light
05. Check engine light
06. Red stop lamp
07. Regeneration inhibited lamp
08. Home
09. Acknowledged regen
10. Regen inhibit
11. Return

Right Hand Arm Rest



01. Ignition / engine start
02. 12v power outlet
03. USB charging point
04. Home button
05. Radio mute
06. Air conditioning / heating short cut
07. Fan speed short cut
08. Travel speed
09. Engine eco mode
10. Quick hitch activation
11. Work lights
12. Windscreen wiper
13. Windscreen wash
14. Regeneration activate
15. Regeneration inhibit
16. Beacon ON/OFF
17. Travel alarm mute

To start the machine, press the ignition button 1. The display will power on. Once the display is active, press and hold the engine start button 1 for 5 seconds and the machine will start.

Left Hand Arm Rest Soft Keys



01. Hoisting limit alarm activate
02. Mute
03. Quick hitch menu
04. Constant auxiliary flow
05. Beacon ON/OFF
06. Attachment selection menu

Emergency Stop



01. Emergency shut down button

To activate the emergency stop, press the red mushroom top in. This will lock into place shutting down the engine.

To reset the emergency stop, switch the ignition off and wait until the display shuts down.

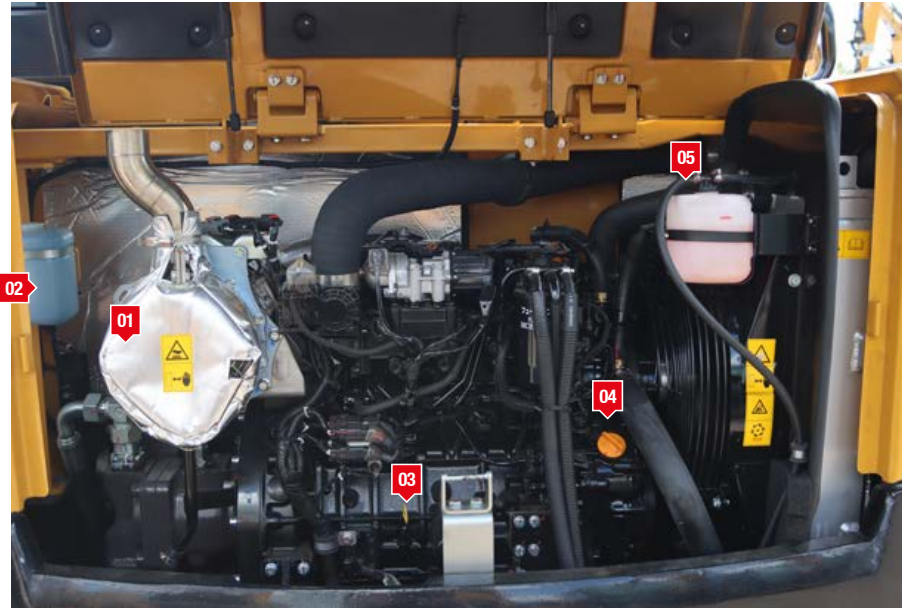
Twist the emergency switch anticlockwise. The switch will 'pop' out and you can then restart the machine.

Rear Right Hand Engine Bay



- 01. Engine coolant
- 02. Engine air filter
- 03. Engine fuel filter and water separator
- 04. Coolant pack

Engine Bay



01. Exhaust

02. Windscreen wash

03. Engine oil dipstick

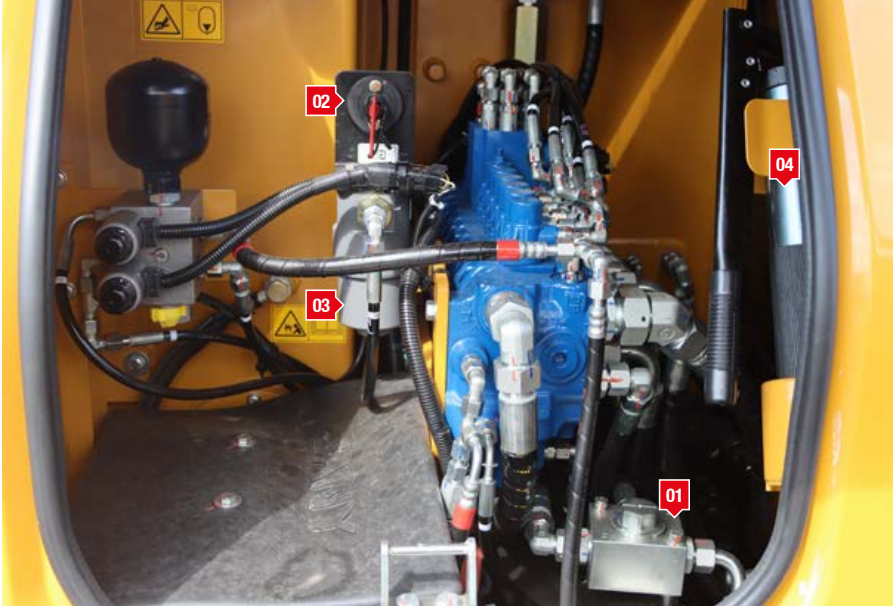
04. Engine oil filling point*

05. Engine coolant reservoir**

*Only SANY approved engine oil to be used in this machine.

**Only SANY approved engine coolant to be used in this machine.

Right Hand Access Panels



- 01. 2 way change over valve
- 02. Battery isolator

- 03. Hydraulic filter
- 04. Grease gun

Quick Hitch Guide

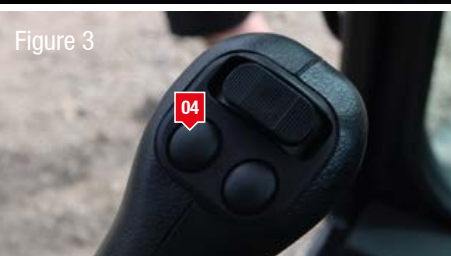
Figure 1



Figure 2



Figure 3



To remove or change attachments:

- Press button 1 (Figure 1) to access the quick hitch menu.
- Curl the attachment right into the machine to the stop.
- Press button 2 to activate the hitch. (Figure 2)
- Press button 3 to prepare the hitch for unlock. (Figure 2)
- Hold the right hand control lever fully left, keeping the attachment curled into the stop.
- Press and hold the left hand button on the left hand control lever (button 4, Figure 3), this will release the hitch jaws.*
- Once the attachment has been removed, if fitting another attachment, keep holding button 4 to keep the hitch unlocked.
- When the next attachment is picked up release button 4 and the hitch will automatically lock.
- Deselect buttons 3 and 2 (Figure 2)
- Return to the home screen or tool selection if the new attachment requires hydraulic connections. (Ref page 10)

***ONLY UNLOCK THE HITCH WHEN IN A SAFE PLACE TO DO SO WITH PLENTY OF ROOM AND NO BYSTANDERS IN THE AREA OF THE MACHINE.**

Dozer Blade Control



01. Horn

02. Travel speed selection

03. Dozer blade control lever

